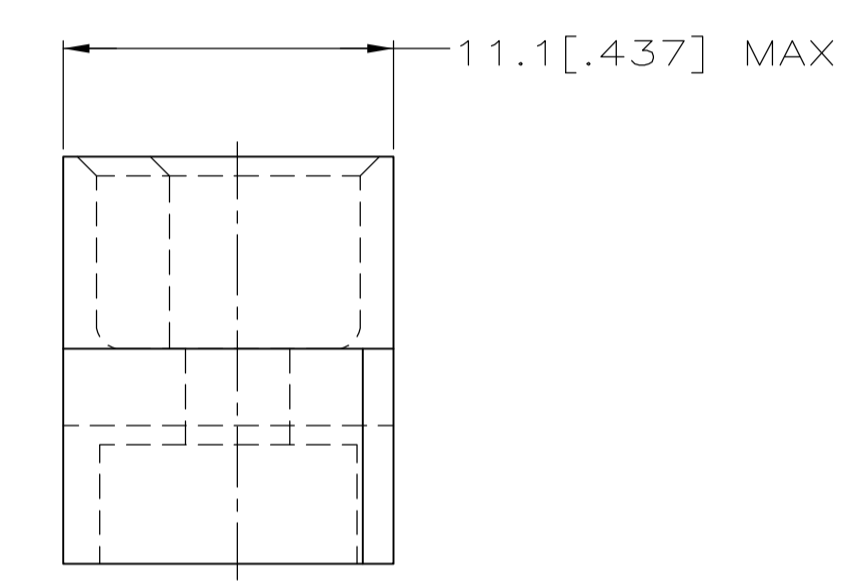


- 1 HOUSING MATERIAL: GLASS-FILLED POLYESTER. COLOR: GRAY.
- 2. INTERFERENCE CAVITIES LOCATED AT POSITIONS 1,32 IN ROWS "A" AND "C".
- 3 AMP PART NUMBER MOLDED IN THIS APPROXIMATE AREA.



OBSOLETE	16.99 [.669]	2.36 [.093]	16.05 [.632]	7.16 [.282]	535074-4
OBSOLETE	13.23 [.521]	2.36 [.093]	12.32 [.485]	3.43 [.135]	535074-3
	16.99 [.669]	3.18 [.125]	15.24 [.600]	6.35 [.250]	535074-2
	13.23 [.521]	3.18 [.125]	11.43 [.450]	2.54 [.100]	535074-1
	CONNECTOR TAIL LENGTH	PC BOARD THICKNESS	G	F	PART NUMBER

THIS DRAWING IS A CONTROLLED DOCUMENT.

DIMENSIONS: INCHES	TOLERANCES UNLESS OTHERWISE SPECIFIED:	0 PLC ± -	1 PLC ± -	2 PLC ± -	3 PLC ± 0.13[.005]	4 PLC ± -	ANGLES ± -	FINISH -
DWN L BRINER 10/6/89 CHK R PATTERSON 7/21/89 APVD -		<b>tyco</b> Electronics Tyco Electronics Corporation Harrisburg, PA 17105-3608		PRODUCT SPEC - APPLICATION SPEC - SIZE A1 CAGE CODE 00779 DRAWING NO 535074		SHROUD, EUROCARD WITH MOUNTING HOLES RESTRICTED TO -		
MATERIAL 1		WEIGHT -		CUSTOMER DRAWING		SCALE 4:1 SHEET 1 OF 1 REV H		